

SHADOWS . SIGNS

jusha + sven mueller



shadows · signs
works on canvas and wood
selection 2003 – 2010

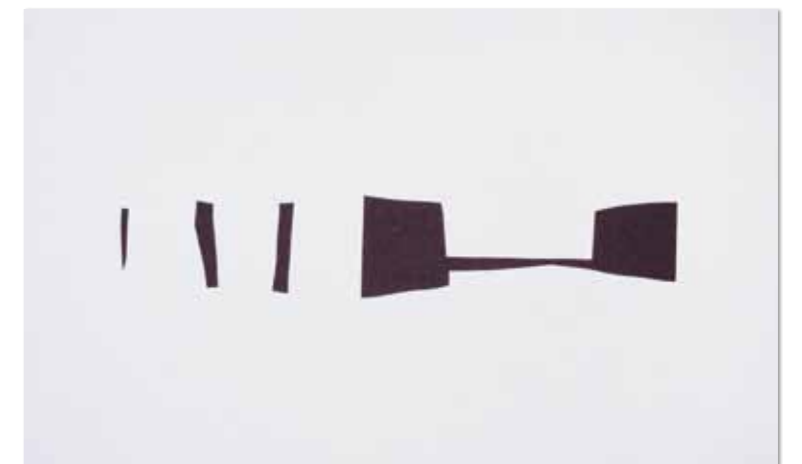
on form and shadows

“I consciously depart from consensus reality when I paint. I journey inward, into my darkness. This darkness gives birth to light. But matter is dissolved in light—and light gives birth to form.”

“Light and shadows are the only visibly existing two-dimensional realities in our three-dimensional world. All else, even the trace left by a pencil on a sheet of paper, has height, breadth and depth.”

From: Jusha Mueller – Statements, Blätter zur Kunst, 2008

Left: shadows / grey-black 1 · 2007 · colored paper/paper on wooden body · 50 x 30 x 3 cm
Right: shadows / black 2 · 2007 · colored paper/paper on wooden body · 30 x 50 x 3 cm





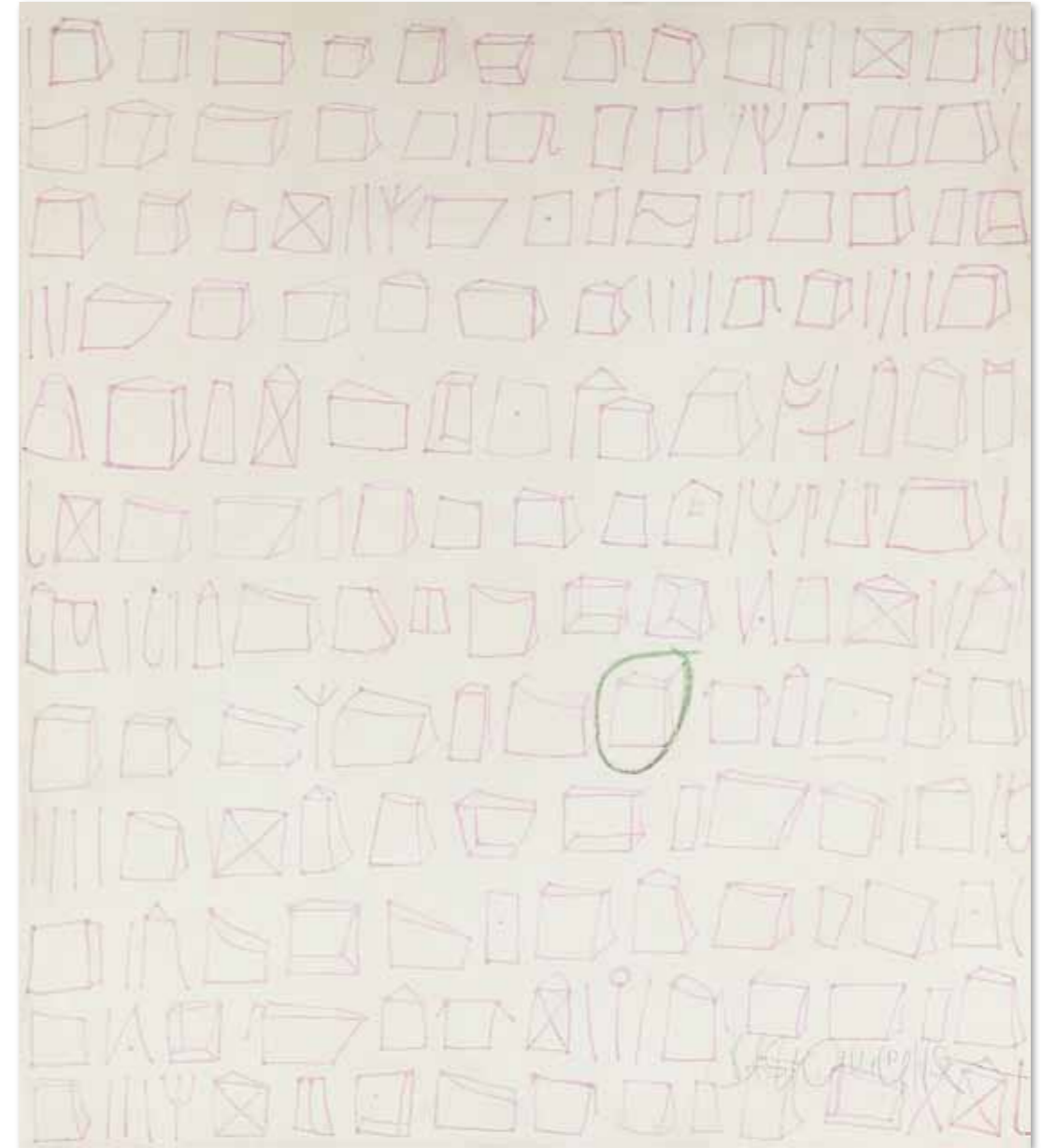
06/209 shadows black · 2006 · acrylic on canvas · 40 x 220 cm

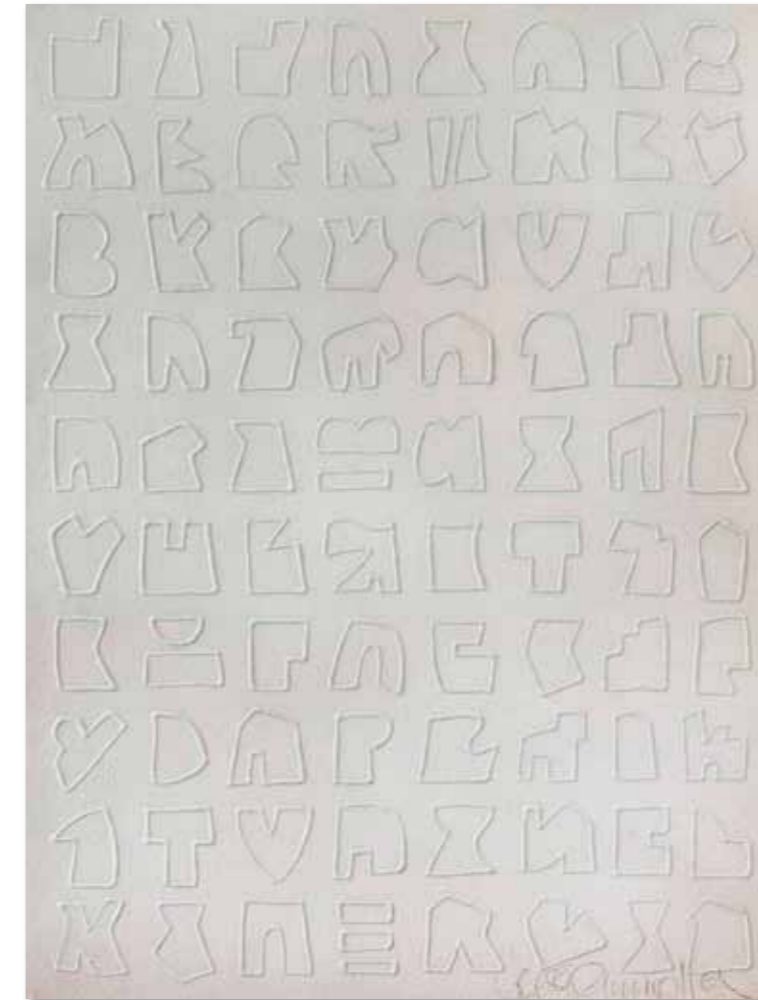
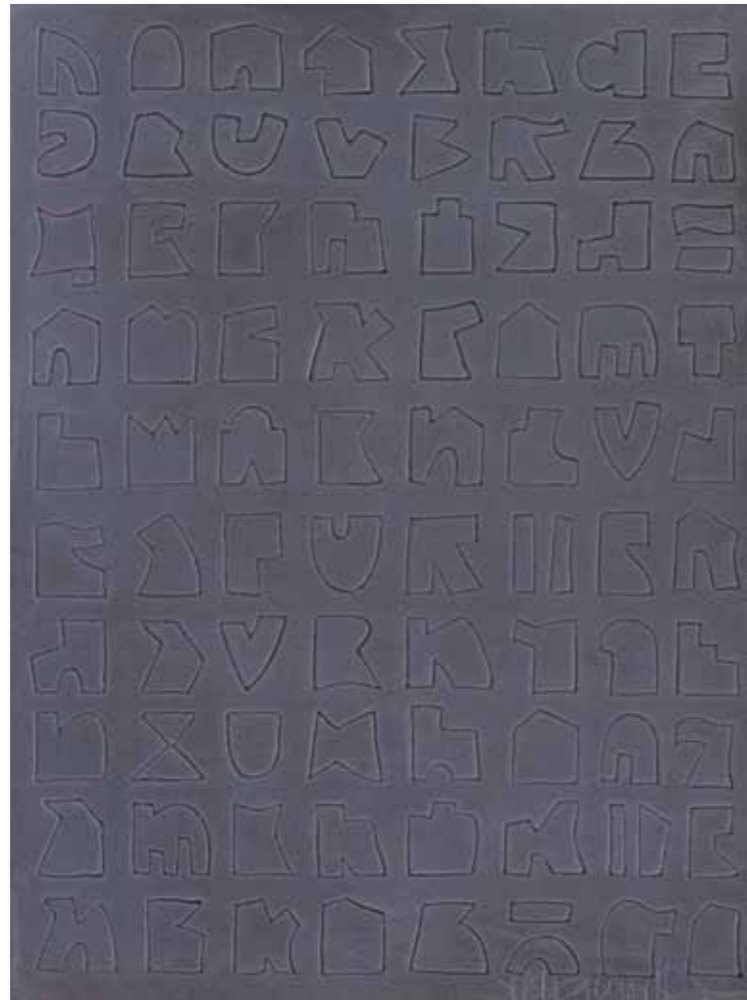
07/216 shadows red · 2007 · acrylic / oil chalk on canvas · 200 x 150 cm





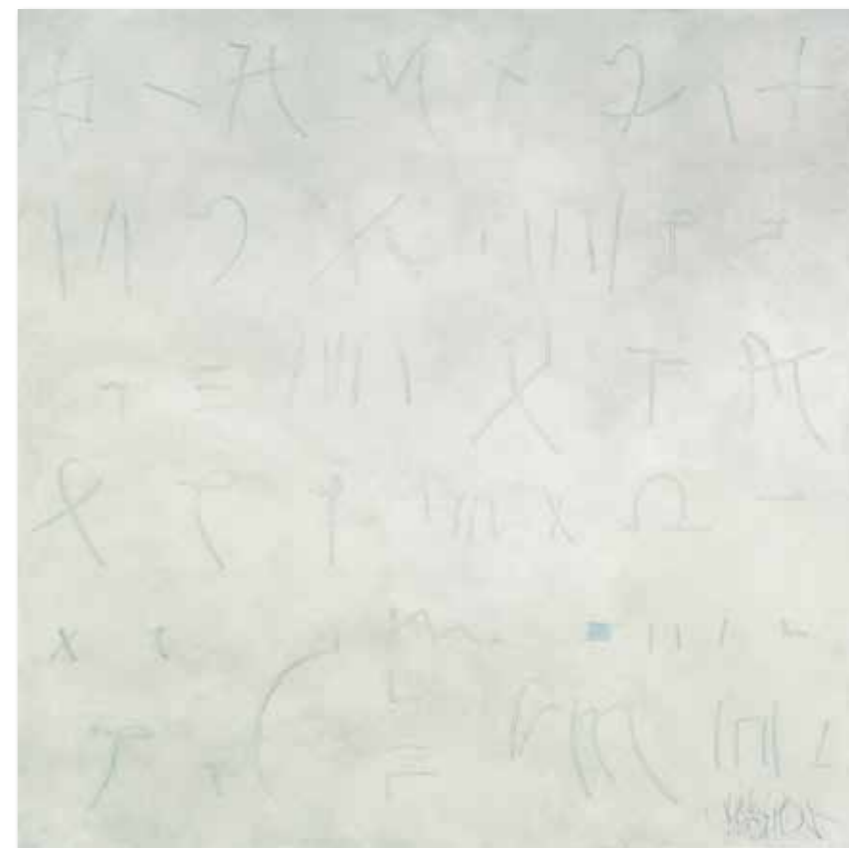
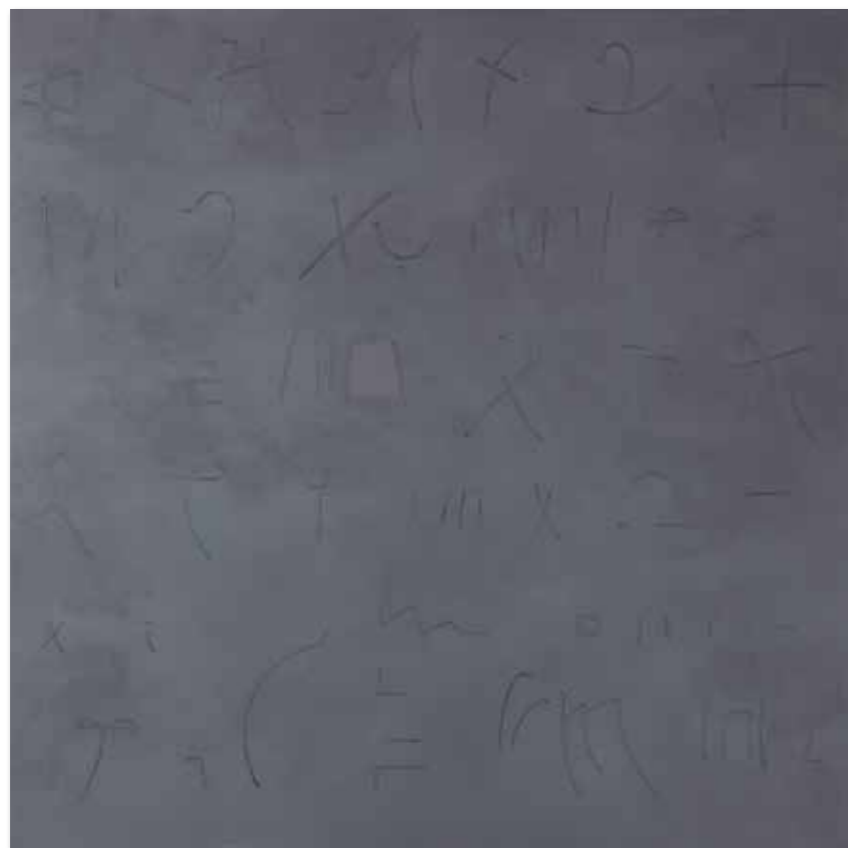
Below, from left: 10/321 shadows and 10/318 shadows · 2010 · acrylic on wooden body · 20 x 20 x 3 cm each
Above: 10/319 shadows · 2010 · acrylic on wooden body · 20 x 20 x 3 cm





10/322 signs · acrylic on wooden body · 2010 · two parts · 60 x 40 cm each







03/113 signs whitish grey · 2003 · acrylic on canvas · 140 x 90 cm



04/141 signs bluish green · 2004 · acrylic on canvas · 140 x 90 cm





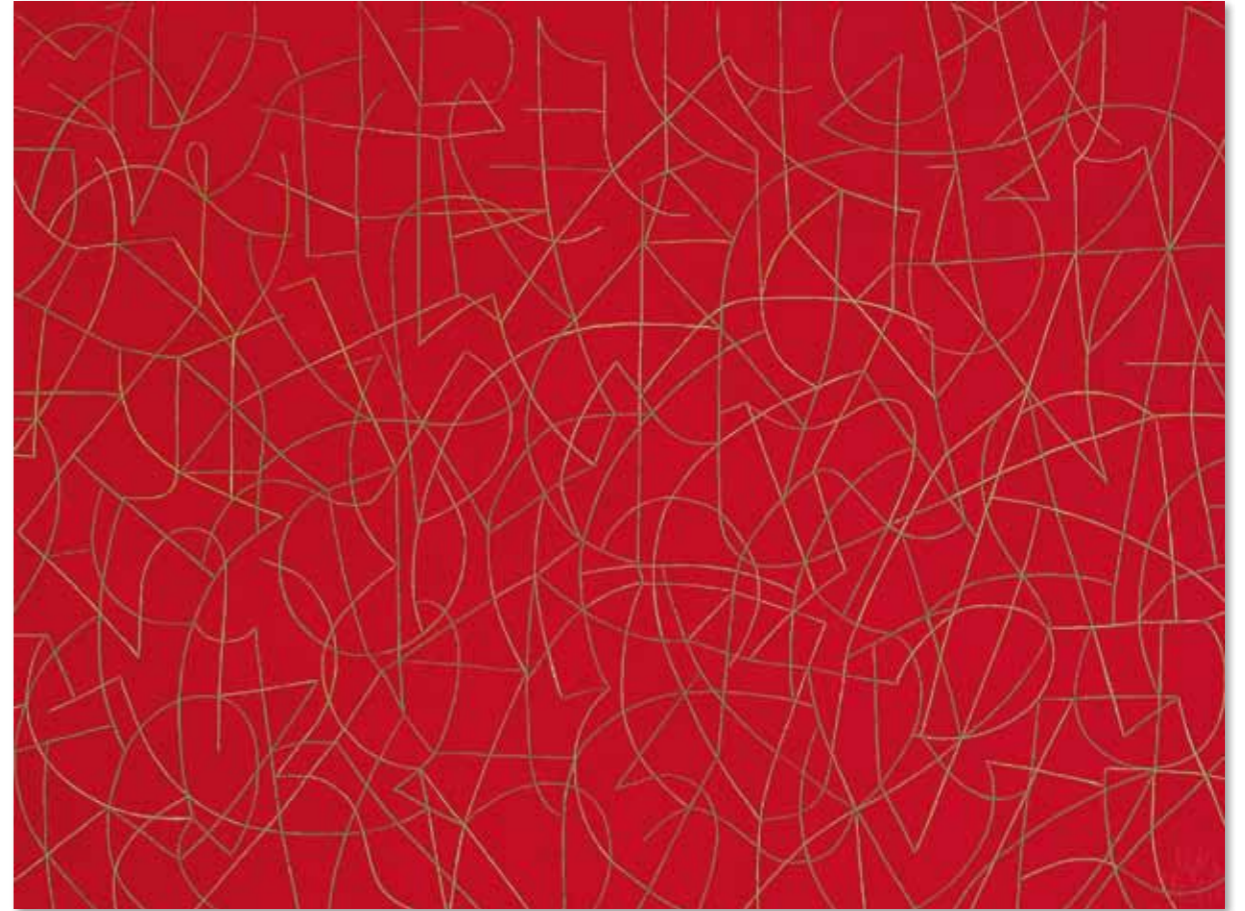
06/205 signs green · 2006 · acrylic on canvas · 150 x 30 cm



07/214 signs red · 2007 · acrylic on canvas · 250 x 50 cm



07/218 network silver on black · 2007 · acrylic on canvas · 90 x 120 cm



07/217 network green on red · 2007 · acrylic on canvas · 90 x 120 cm

info@jushamueller.de
info@art-em.de

Handwritten text in a stylized, cursive script, possibly representing a signature or a name. The characters are light and appear to be written on a textured surface.